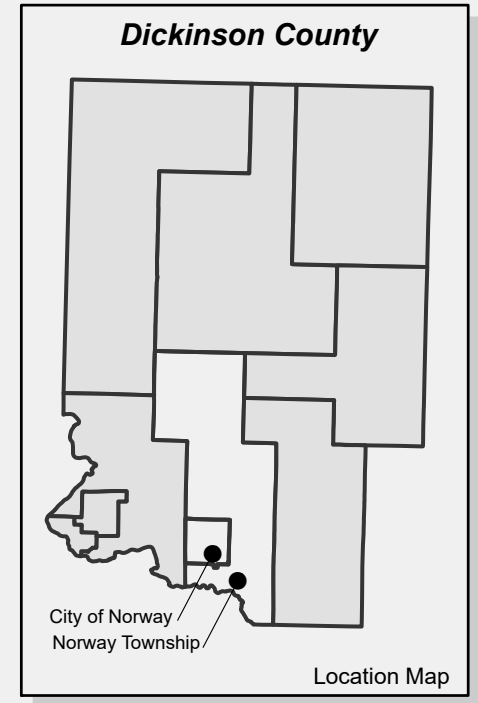
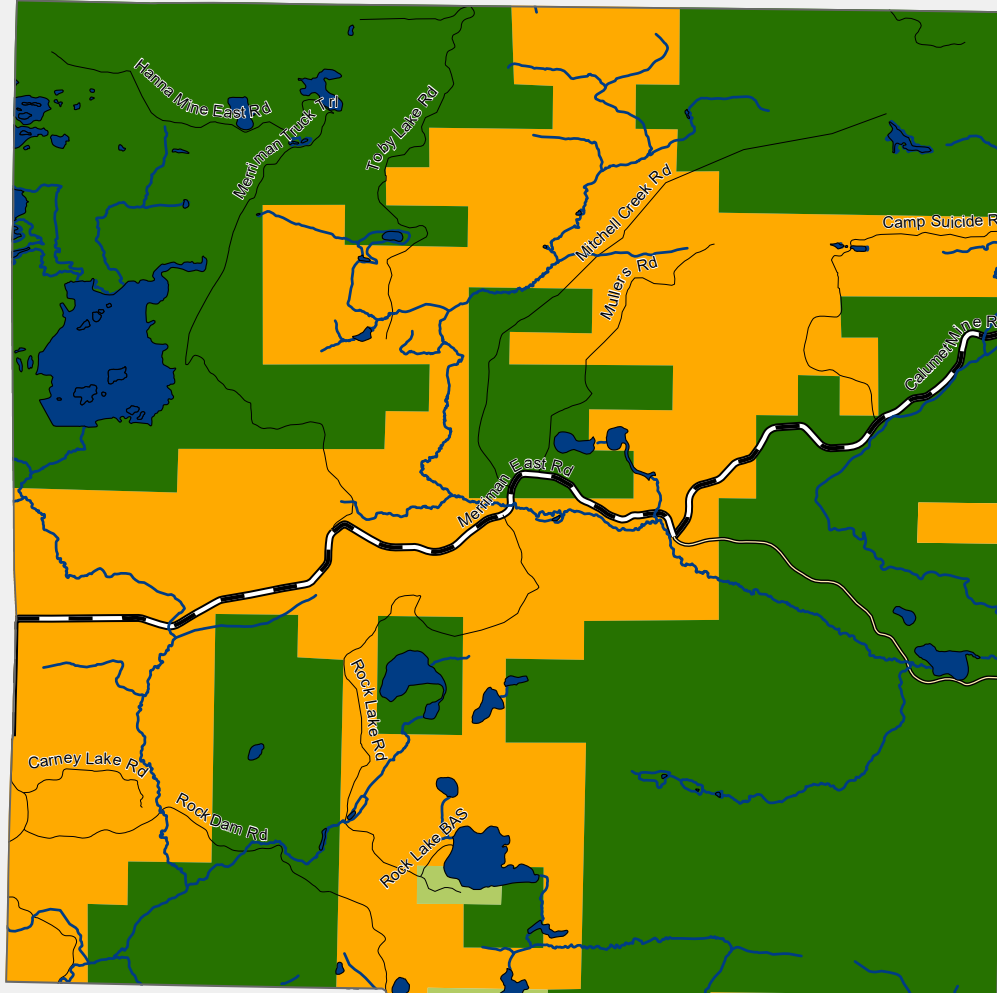
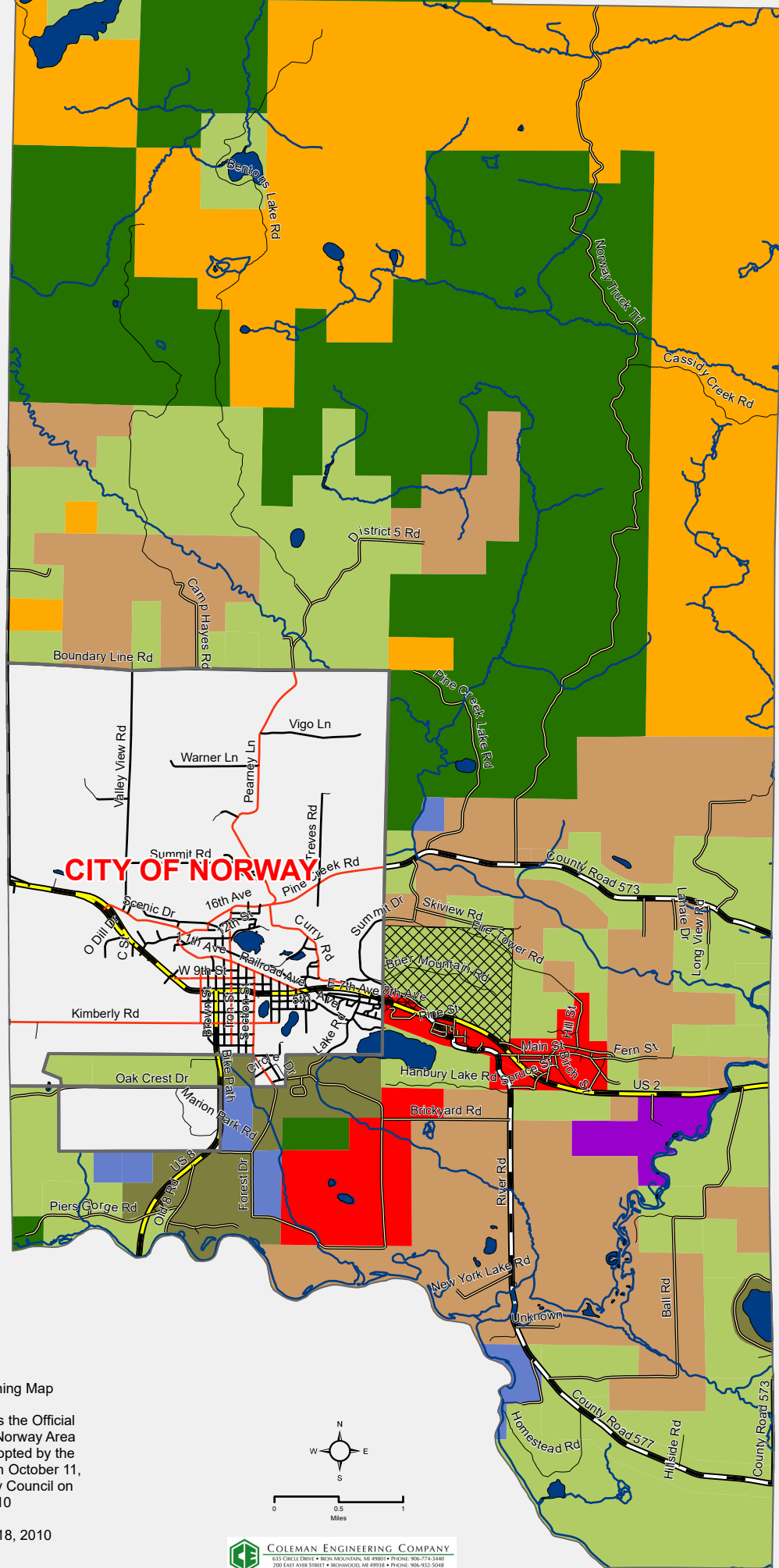


Norway Area Zoning



City of Norway



Zoning Legend	
	HCO, HIGHWAY COMMERCIAL OVERLAY
	RESIDENTIAL ONE
	RESIDENTIAL TWO
	RESIDENTIAL THREE
	RURAL RESIDENTIAL
	BUSINESS ONE
	BUSINESS TWO
	BUSINESS THREE
	BUSINESS FOUR
	INDUSTRIAL
	I-1, INDUSTRIAL
	PUBLIC LAND
	RESOURCE PRODUCTION
	TIMBER PRODUCTION
	AGRICULTURAL PRODUCTION

ROADS LEGEND	
	State Trunkline
	County Primary
	County Local
	City Major
	City Local
	Non Act-51 Certified

TOPOGRAPHIC SYMBOL LEGEND	
	Lakes
	Rivers and Streams
	parcel layer

NOTES

- NORWAY AREA ZONING ORDINANCE No. 392
- INITIAL MAP (3/1/2004)

REVISIONS

- REVISION #1 - ACCESS MANAGEMENT OVERLAY ZONE (5/15/2006)
- REVISION #2 - GLOBAL ORDINANCE REVISION (11/3/2010)
- REVISION #3 - NORWAY TOWNSHIP BOARD AND NORWAY CITY COUNCIL COORDINATES
- CITY OF NORWAY AND NORWAY TOWNSHIP AREA ANNEXED BY THE CITY OF NORWAY FROM NORWAY TOWNSHIP. (10/28/13)
- CITY OF NORWAY ZONING ADDITION OF B-4, BUSINESS FOUR (8/17/16)
- CITY OF NORWAY CHANGE RP-RESOURCE PRODUCTION TO RR-RURAL RESIDENTIAL
- NORWAY TOWNSHIP RURAL RESIDENTIAL CHANGED TO RESOURCE PRODUCTION (5/16/19)
- US 8 HCO REMOVED AND ADDED OVER NE CORNER OF US 8 AND GORGE RD INTERSECTION (5/16/19)

SIGNATURE

Carlynn Damm
NORWAY CITY MAYOR

Justin Plante
ATTEST BY NORWAY CITY CLERK

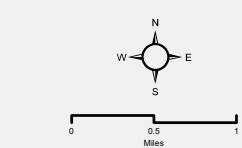
Wendy Byers
NORWAY TOWNSHIP SUPERVISOR

Dave Anderson
ATTEST BY NORWAY TOWNSHIP

Norway Area Joint Zoning Map

This is to certify that this is the Official Joint Zoning Map for the Norway Area (Dickinson County) as adopted by the Norway Township Board on October 11, 2010 and the Norway City Council on October 18, 2010

Effective: November 18, 2010



COLEMAN ENGINEERING COMPANY
303 SOUTH DOWNS • ROCKY MOUNTAIN, GEORGETOWN, GEORGETOWN, GEORGETOWN
200 EAST AVENUE STREET • ROCKY MOUNTAIN, GEORGETOWN, GEORGETOWN • PHONE: 906-532-3048